

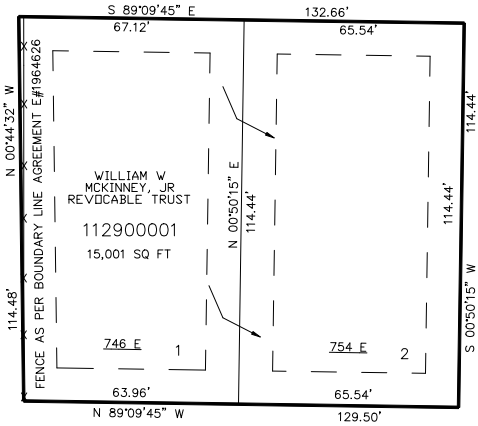
PART OF THE S.W.1/4, OF SECTION 9, T.6N., R.1W., S.L.B. & M.
NORTH RIDGE ESTATES SUBDIVISION PH.1

TAXING UNIT: 25

IN OGDEN CITY
SCALE 1" = 30'

SEE PAGE 191

SEE PAGE 80-1



SEE PAGE 80-1

NORTH STREET

SEE PAGE 80-1

10' UTILITY & DRAINAGE EASEMENTS EACH
SIDE OF PROPERTY LINES AS INDICATED
BY DASHED LINES EXCEPT AS OTHERWISE
SHOWN.

FOR COMPLETE ENG DATA SEE
ORIGINAL DEDICATION PLAT IN
BOOK 50, PAGE 95 OF RECORDS.